

ANNUAL REPORT 2022

NOTE FROM OUR PRESIDENT

We are excited that the Brunkhorst Foundation's generous \$50,000 grant to PSG has enabled us to hire Amy Guzulaitis as our full-time Coordinator and to increase Jordyn Taylor's hours as the Assistant Coordinator! We have also added new board members reflecting the next generation of urbanists!

With your help, we can go into 2023 full steam ahead to keep fighting for a sustainable Richmond region. There is no local organization quite like PSG – addressing the intersection of land use, housing, transportation, and the environment. We aim to help the region avoid the sprawl of Northern Virginia, through revitalizing our city and older suburbs in an inclusive way, investing in transit and walkable transit-oriented communities, and protecting farms and forests. We hope you will donate to support our new team!

Stewart Schwartz

President

NOTE FROM OUR COORDINATOR

Jordyn and I are excited to be working for PSG. I recently earned my Masters in Urban and Regional Planning from VCU, and Jordyn is now applying for the program. We are motivated to be helping local advocates in our region and hope that you will join PSG at our walking tours and forums, in sending emails and testifying to your local officials, and in spreading the word to your friends and co-workers! Together we can win a more sustainable and equitable future for our region. .

Thanks for all of your support!

Amy Guzulaitis

Lead Policy Coordinator

OUR MISSION

The Partnership for Smarter Growth advocates for a sustainable and equitable future for the Richmond region by promoting transit-oriented communities that are safe, walkable, and bike-friendly.

STAY ENGAGED!

There are several ways to get involved and support our work.



DONATE

PSG relies on donors like you to help us continue our mission. Donations big or small are always appreciated.



TAKE ACTION

Sign up for our email alerts to learn more about important issues in the Richmond region and find opportunities for you to take action!



CONNECT WITH LOCAL ADVOCATES

Join us to work with local community advocates and in coalition with partner groups.



QUESTIONS?

Email us at contact@psgrichmond.org!

SUSTAINABLE TRANSPORTATION

Transit and local, safe street networks for walking and bicycling are essential to Smart Growth



GRTC PULSE (BUS RAPID TRANSIT) EXTENSIONS

The GRTC bus system serves the City of Richmond and adjacent counties and is essential for connecting people to jobs and services. Competitive regions need great transit, and PSG has campaigned for better bus service in the region, including sharing recommendations, getting folks engaged, and offering testimony in favor of a north-south Bus Rapid Transit corridor, west to Short Pump, and to Amtrak at Staples Mill.



GAYTON ROAD INTERCHANGE

The debate over how the County should develop is in full swing in Henrico. The County and VDOT are proposing a new interchange off I-64 in Short Pump, effectively opening the area north of I-64 to more development in Henrico and even western Hanover, and eventually more traffic. PSG has weighed in against this proposal, sending email alerts and spreading awareness in favor of a smaller interchange for access to Short Pump and increasing transit, walking, and cycling opportunities.

TRANSIT-ORIENTED DEVELOPMENT

Smart Growth relies on concentrating growth in compact and walkable urban centers with access to transit to avoid sprawl.



GOODBYE PARKING MINIMUMS

PSG has long advocated for less required parking, especially in the City of Richmond. Too much parking makes development and housing more costly and adds to traffic. As Richmond grows, we need to combine parking strategies with expanding transit service, and making walking and biking safer. PSG has endorsed the city's proposal to eliminate parking minimums, and engaged our members in supporting this change.



HENRICO COMPREHENSIVE PLAN

Ensuring transit-oriented development along the county's inner suburban commercial corridors is included in a locality's comprehensive plan is one of the best ways to encourage this type of development in the future instead of sprawl. PSG has and will continue to be a part of the comprehensive plan update process for Henrico County, encouraging encouraging revitalization of older areas, preservation of farmland, and more transit options



Image courtesy of Henrico County

PRESERVING OPEN SPACE

Conserving open and rural areas for the future to avoid sprawl is an important piece of smart growth.



HANOVER COMPREHENSIVE PLAN

Hanover County has long been a mostly rural county on the outskirts of the Richmond region and can be a long term source of food and other agricultural products, especially as crops in California are threatened by long term drought. We also have plenty of paved-over commercial corridors which could absorb growth in homes and services. PSG supports local advocates in the Coalition for Hanover's Future as they engage the community in the comprehensive plan update.



**ENVISION
HANOVER**

Image courtesy of Hanover County

PROTECTING THE ROUTE 5 CORRIDOR

The Route 5 corridor is America's second oldest road and a scenic byway and connects Richmond to our earliest history for Native Americans, Colonial settlement, horrific enslavement, and the Black Union troop heroism at the Battle of New Market Heights. Yet, this scenic and historic area east of Richmond is at risk of being carved up by poorly planned development, adding traffic, and even leading to doubling the size of Route 5. We are supporting local advocates seeking a more sustainable future.



SPRAWL ON RURAL LAND

When a massive section of agricultural land was proposed for a residential development in Hanover County, Hickory Grove, residents cried foul. PSG joined local residents in calling for the Board of Supervisors to reject the 52 acre proposal that was incompatible with rural farm and forest uses and would create more traffic issues. Thanks to PSG and others' advocacy, the County rejected this proposal 6-1, preserving the land for the future.

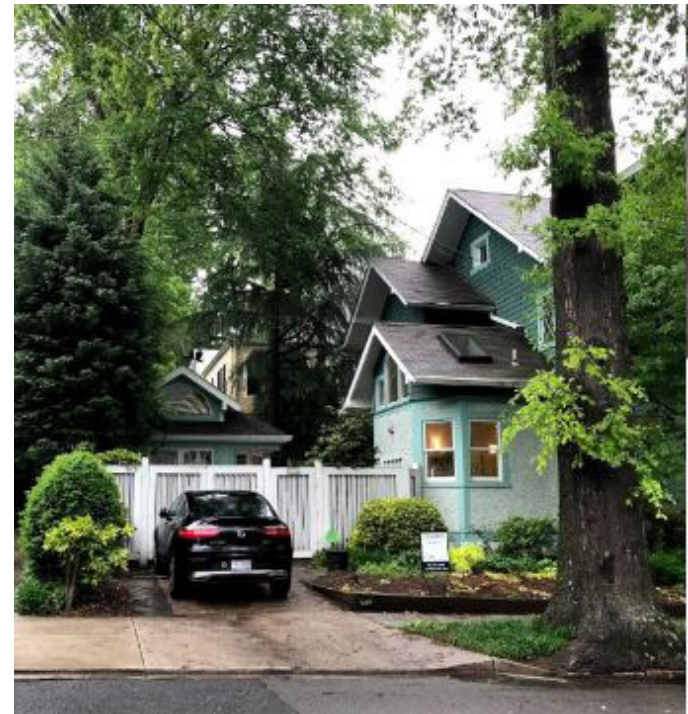
AFFORDABLE HOUSING

Smart growth includes making sure there are safe and affordable places for people to live in every community.



ACCESSORY DWELLING UNITS IN RICHMOND

PSG has released a comprehensive affordable housing agenda for more funding, inclusionary zoning, more affordable housing in public land deals, and more. We also support accessory dwelling units -- backyard cottages, small additions, and English basements -- as another housing option, and don't want to see loss of long-term rental apartments to short-term vacation rentals.



DIAMOND DISTRICT

We've given the city recommendations on many affordable housing tools they could adopt, and this year we've asked the city to increase the percentage of affordable units in the Diamond District project to 30%. With 67 acres and most of it publicly owned, it's a key opportunity for more affordable housing, and the 30% goal would match DC's approach for public land. We're also weighing in on City Center, where the city is now seeking private proposals..



CITY CENTER

Recently, we commented on City Center redevelopment plans and their requests for Information (RFI) from development firms. Similar to Diamond District, we are concerned for the percentage of units that will be reserved for affordable housing and hope that there can be more public transparency and engagement with this project. Since City Center is in the heart of downtown Richmond and has several public transportation options available, this is a prime opportunity for mixed-income hous-





HELP US CONTINUE FIGHTING FOR SMART GROWTH

We promote a vision of a more sustainable region – where farms and forests are preserved, our city and older suburbs revitalized, affordable housing is prioritized, and we create safer, more walkable, bike-friendly, and transit-oriented streets.

Partnership for Smarter Growth
701 E Franklin Street, Suite 800
Richmond, Virginia 23219



Your donation makes a difference!
You can donate online anytime at
psgrichmond.org/donate.

Help us advocate for a more
sustainable region today!